



Fall / Winter 2009

Royall House Reporter

The Newsletter of the Royall House Association

THE KITCHEN CHAMBER AND KITCHEN: EXPANDING OUR INTERPRETIVE REACH

In recent months, we have been working to reinterpret the Kitchen Chamber to better show the presence of enslaved Africans in the Royall House (see *Winter 2008-2009* issue of the *Royall House Reporter*). Like all such ambitious projects, this involves the need for substantial funding.

So, you can imagine our delight when The National Trust for Historic Preservation (NTHP) recently awarded us a \$2,000 grant from its Cynthia Woods Mitchell Fund for Historic Interiors. The matching grant is one of just 16 awarded nationally in a highly competitive process. Thank you, NTHP!

We need to match the award with \$2,000 from our own resources. The total amount will be used for historic paint analysis (which has already begun) and the creation of a furnishings analysis. Additional funds are needed to complete the physical work (woodwork, plastering, painting) and furnish the room with items suggested by Isaac Royall Senior's 1739 Probate Inventory.

This support of our reinterpretation work has lead us to think more broadly, or, to be exact, more vertically – down to the Kitchen itself, right below the Kitchen Chamber. The two rooms were core locations of the work performed by Royall's household slaves. They are connected by the narrow back staircase, with its worn steps and knee-jarring twists. The Kitchen Chamber served as a workroom for cleaning and ironing of linens and (likely) clothing. In the winter, the Kitchen fed the entire household of four Royalls and up to 35 slaves, and was the location of "5 Negroes Beds and bedding" (as detailed in the 1739 Probate Inventory).

Together the two rooms offer a powerful opportunity to better illustrate what was actually happening in the household. We have a general plan for the re-interpretation of the Kitchen Chamber and will now work to link the Kitchen as a unified interpretative feature of the Royall House. Today the Kitchen is furnished with a large number of kitchen tools and much furniture. More generally,



Brian Powell analyzing historic paint in the Kitchen Chamber

Continued on next page

Officers

Peter Gittleman
Co-President

Penny Outlaw
Co-President

John Woods
Vice-President

John Anderson
Treasurer

Lincoln McKie, Sr.
Assistant Treasurer

Jennifer Pustz
Recording Secretary

Gracelaw Simmons
Corresponding Secretary

Board of Directors

Michael Baenen
Anne Donaghy
David Goodine
Bruce Harris
Margen Kelsey
Michael Oliver
Pamela Speciale

Executive Director

Thomas W. Lincoln

Academic Advisory Council

Rachelle V. Browne, Esq.
*Associate General Counsel
Smithsonian Institution*

Alexka Chan, Ph. D.
Archaeologist

Steven Cohen
*Depts. of Education
and American Studies
Tufts University*

Rachel Fletcher
*Upper Housatonic Valley
African American Trail*

Prof. Frances Jones-Sneed
*Department of History
Massachusetts College
of Liberal Arts*

Prof. Joanne Pope Melish
*Department of History
University of Kentucky*

Margaret Vetare
Interpretation Consultant

however, the room is replete with Colonial Revival elements. While an engaging and educational part of the tour, it will need to be carefully reworked to improve its important role in telling the complex stories of the Royall household.

We will need considerable additional funding in order to make this unified vision happen. We are now working on a budget that will incorporate both the Kitchen Chamber and Kitchen. In the near future we will roll out a campaign in hopes of funding these plans. We're inspired by the National Trust's vote of confidence. We eagerly look forward to your support and the chance to better tell the important stories of the Royall House and Slave Quarters.

Meet Our Newest Board Members

We're delighted to announce the addition of two new members to the Royall House Board of Directors. These individuals are important additions to our "working Board" and we look forward to working with them in the months ahead.

Anne Donaghy was elected to the Royall House Association Board at the Annual Meeting held in May, 2009. For the past 13 years Anne has served as registrar for a corporate art collection in Massachusetts. Prior to that, she worked for the Society for the Preservation of New England Antiquities (now Historic New England) as a curatorial assistant and researcher. Anne brings with her a strong understanding of decorative arts and material culture and has experience working on furnishings plans for historic sites. She holds a Master's Degree in Library Sciences from Simmons College as well as a Graduate Certificate in Management from the Radcliffe Institute for Advanced Study at Harvard. She is a member of the Colonial Society of Massachusetts. In addition to contributing her insights into our mission and institutional development, Anne will be a big help with our collections and their presentation to the public. Welcome, Anne!

Michael A. Baenen is our latest addition to the Board, and arrived in fall of 2009. For three years he has been the Chief of Staff in the President's Office at Tufts University, not far from our site. He previously worked at MIT in Cambridge. Mr. Baenen has a Master's in History from Harvard University; his undergraduate degree in history is from Columbia University in New York City.

On the public history front, Mr. Baenen served as an officer and on the board of the Portsmouth Atheneum (founded in 1817) and has a keen and broad interest in 18th century America.

Mr. Baenen came for a tour with Tom Lincoln in the summer and spoke enthusiastically about our site and our mission. His experience in nonprofit management, event planning, and historic research will be much appreciated. In addition, his keen understanding of the academic world will undoubtedly be put to good use! Welcome, Michael!

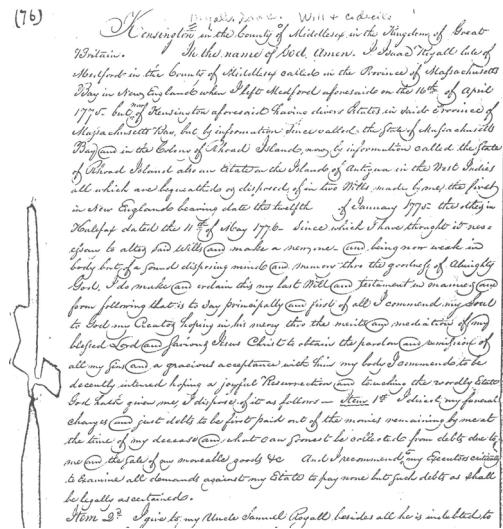
News Briefs

- ◆ Our September 20, 2009 **Concert** in the West Parlor of the Royall House was very well received. Special thanks to the Medford Cultural Concert, our audience and **Heloise DeGrugillier**, the virtuoso recorder player!
- ◆ The **Second Century Celebration** was a big success on May 30, 2009. A good crowd enjoyed the food, conviviality, and an insightful and provocative talk by Professor **Joanne Pope Melish** of our Academic Advisory Council. Special thanks to our Sponsors (listed on the insert)!
- ◆ **Margen Kelsey** and **Gracelaw Simmons** have agreed to serve as co-managers of the **Royall House Shop**, continuing the wonderful work of **Rosemarie Woods** and **Fran Stahler**. Be sure to visit (and shop!).
- ◆ Our Guide Corps is hard at work giving tours for the remainder of our 2009 season. **Linnea Bennett** and **Jane Finlayson** have joined the crew as Guides-in-training. Thanks to all, and a special welcome to our newcomers!
- ◆ Volunteer (and Guide) **Ryan Hayward** has been Working to create measured drawings in CAD of the floor plans of the Slave Quarters and Royall House, as well as detailed analysis of the structures with the long term goal of creating a Historic Structures Report (HSR). The HSR is considered a foundation resource that explains and documents the evolution of buildings, notes their history, and talks about preservation. It is, in essence, the "house bible" and should contain the answers to all structure questions. It is also a living document, recording any preservation work undertaken. Ryan is a Bachelor of Design Studies Student at the Boston Architectural College. His focus is in Historic Preservation. He has a comprehensive understanding of historic buildings, having worked on such notable buildings as the Brooks Estate (1880), Stephen Phillips House (1799-1806), Salem Witch House (1678) and the New Salem Academy (1838). He is employed at B. Goba & Associates, P.C., Architects, in Medford.
- ◆ The Landscape Committee is now being chaired by **Lindsay Rider**. Despite difficult summer conditions, the flowerbeds and shrubs have flourished thanks to the Committee's hard work and perseverance.
- ◆ Groups from three youth programs in Medford and Somerville came for tours in June and July as part of our outreach to this important segment of our audience.

Primary Source Documents Now on Our Website

Thanks to a grant from MassHumanities and six months of hard work by Rosemarie Woods and Kaitlin Edwards, a large inventory of 18th and 19th century source materials related to the Royall House and Slave Quarters has been analyzed, cataloged and put on our website as a public resource.

Most importantly, we now have a unified body of primary documents to assist teachers, scholars, and other researchers, as well as our own organization to interpret the history of the site. Kaitlin Edwards served as the "Inventory Taker," and the project was overseen by Rosemarie Woods. 81 documents were sourced, examined, and cataloged in five basic categories: PR = Public Records; N = Newspapers; C = Correspondence; Misc = Miscellaneous; and S = Supplementary



A page from Isaac Royall Jr.'s will (1778)

Each document includes key information: Title, Date of Item, Description, Database/Repository, Format, URL (for online access), Author, Series notes and links if relevant. Wherever possible, a legible facsimile of the document is included; original documents are found in a range of Massachusetts and national archives. Finally, a master index was created. This is an important step in our efforts to serve researchers and the public.

These items can be found online at:
www.royallhouse.org/Documents

The Royall House Association explores the meanings of freedom and independence before, during, and since the American Revolution, in the context of a household of wealthy Loyalists and enslaved Africans.

The Royall House and Slave Quarters is located at 15 George Street, Medford, MA 02155. To join, or for more information: (781) 396-9032 or www.royallhouse.org Contents © 2009 by the RHA

Co-President's Letter

Dear Royall House Association Members and Friends:

First of all let me say a heartfelt "thank you" to John Woods for his service to the Royall House Association as President. We would not be where we are without his strong and effective leadership. Peter Gittleman and I are grateful that he has continued his involvement with the Association since stepping down as President. I would also like to thank Rosemarie Woods, who recently stepped down from the Board, for all of her hard work. She too has continued her involvement with the Association by leading selected special projects as her schedule allows.

Peter Gittleman and I are excited about our new role as Co-Presidents. One of our key initiatives will be to continue the work started by John Woods on our Annual Plan. The Annual Plan was developed to break down our strategic plan into specific annual goals that are assigned to various Board members and to our Executive Director, Tom Lincoln. We will be asking you contribute some of your time – if you can – to work on moving our strategic plan forward through important committee work.

As the front page article notes, we are embarking on a major re-interpretation initiative for both the Kitchen Chamber and (now) the Kitchen. As this critical endeavor moves forward, we look forward to your input and financial support.

The Second Century Celebration held on May 30, 2009 was a rousing success. Those who attended were riveted by Joan Pope Melish's lecture on the gradual abolition of slavery in the Northeast. Thanks to all of those who attended and/or contributed. In these difficult times, your contribution is absolutely invaluable.

As always, I urge you to let your family and friends know about the Royall House. Lastly, thank you to our tour guides. As someone who also serves as a Guide, I know that it is a challenging and extremely rewarding experience. Peter and I look forward to seeing you at the Royall House and Slave Quarters for our upcoming Public Programs this fall and winter!

- Penny Outlaw, co-President



Special bonus for our online readers. . .

Additional photos follow page 6. . .

Thank You to the Generous Sponsors of Our Second Century Celebration

Patrons

Elizabeth Bombaci ♦ Richard A. Duffy
Boston Tea Party Chapter of the National Society
of the Daughters of the American Revolution
Paul and Patricia Hatch ♦ John A. Aiello and Bryan R. Smith
Tom Lincoln and Donna Brallier ♦ David and Ursula Goodine
Wallace and Claretta Kountze ♦ Medford Rotary Club
Tufts University ♦ Tufts University Art Gallery
Domenic Camarra - D & M Realty LLC
One Shipyard Way, Medford, MA 02155 dandmrealty@verizon.net
"An honor and a privilege to live and serve in the great city of Medford"

Benefactors

John and Rosemarie Woods ♦ Doug Carr and Donna Laquidara-Carr
Sharon Guzik and Jack Beusmans ♦ The Durney Family ♦ Ruth Roper and Holly Loring
Edward M. Juskalian ♦ Dale and Lindsay Rider ♦ Michael F. Bradford
Mike Oliver and Bev Cohen ♦ Kathy Sayre and Maurice Haddon
Mayor Michael J. and Sheila McGlynn ♦ Pamela and David Speciale
Attorney General Martha Coakley ♦ Sarah Cummer ♦ Julia Royall
Allan and Anne Marie Martorana ♦ Sol and Robyn Gittleman
Celeste Royall Narchios ♦ Mary Marcia Fenske and Rebecca E. Fenske
Lincoln and Barbara McKie ♦ Peter Gittleman ♦ Dana Gallup ♦ Clara Read and Jay Hurd

Supporters

State Senator Pat Jehlen ♦ Dr. William Wood and Carolyn Rosen
John and Heather Anderson ♦ Kathryn Cade ♦ Nancy Colby
David and Josephine X. Pullo ♦ Julie and Rob Abruzzio ♦ Adele Travisano
City Council President Breanna Lungo-Koehn ♦ State Rep. Carl Sciortino
State Rep. Paul J. Donato ♦ M. Lois Hahn ♦ Harry and Betty Lincoln
Judith O. Semper ♦ Cecelia Kelly ♦ Douglas W. Shoop, AIA
Frederick N. Dello Russo ♦ Colonel Francis Royal ♦ Celia Lee and Dan Lasko
City Councilor Robert A. Maiocco ♦ Anonymous (2)
Paulette Van der Kloot - Medford School Committee ♦ Charles and Jean Chapman

Donors

Joanne Valeriani ♦ Jim and Betty Owens ♦ Edward Clark ♦ May Marquebreuck
Michael and Theresa Cerullo ♦ Rena Wallace ♦ Clorinda E. Saragosa
Ken Krause and Maura McEnaney ♦ Ann and George Zantos ♦ Dan Hurley

Wish list: Can you help?

We're looking for donations of the following items. All donations are tax deductible. Please call (781) 396-9032 or send an e-mail to RoyallHouseED@comcast.net if you have anything on this list. Thanks!

2-drawer file cabinet with key ⊕ Foamcore board (3/16" or thicker) ⊕ Heavy duty ice chopper
Blank CDs (R or RW) ⊕ Antique Royall House souvenirs ⊕ Old-fashioned umbrella stand

Upcoming Programs at 15 George Street, Medford

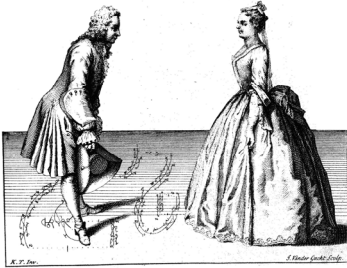
“The Minuet: a Brief History and Demonstration”

(with live music!)

November 18, 2009 at 7:30 p.m.

Veronica McClure and Friends

The minuet was established in the 17th French court, took on a ceremonial and “class status” life of its own that prevailed through the 18th century and lingered to the 19th century. Isaac Royall, Junior was a popular young and energetic host who considered himself a consummate gentleman. Although we do not have direct evidence, it is not unreasonable to assume that he and his peers danced the minuet at the Royall House. For this program, Veronica McClure has gathered dance and music friends for a lively lecture and demonstration of this most essential of 18th century social dances. Perhaps you’ll be inspired to try the steps yourself!



Free and open to the public. Donations are most welcome. The program starts promptly at 7:30 p.m. and seating is limited. For more information, please call (781) 396-9032 or e-mail RoyallHouseEvent@AOL.com.

Illustration at left: Minuet steps explained, from “The Art of Dancing” by Kellom Tomlinson (1735, London) From the Library of Congress Web site.

“The American Kitchen”

January 20, 2010 at 7:30 p.m.

Jennifer Pustz (*Museum Historian at Historic New England, author, and RHA Board member*)

[Save the date - details forthcoming]

Royall House Shop Offerings

The **Royall House Shop** (in the Out Kitchen) is open during Tour Season, Public Programs, and on special occasions. Royall House souvenirs make perfect gifts for out-of-town guests, former Medford residents, or maybe just for you!

We've added some exciting new merchandise! Stop by during tour hours to peruse our wares:

- Royall House pen and letter opener gift sets (\$10)
- Organic bar soaps in delightful colonial-era scents and specially-designed Royall House labels (\$4)
- Note cards (blank inside) by local photographer Mary Sbuttoni, featuring the buildings and gardens (\$3)
- Tea towels, showing the Summer House (large-sized, made from linen in the U.S.) (\$15)
- Handcrafted jewelry featuring whimsical “vintage plastic” birds and flowers (\$8-\$10)

And don't forget to browse our growing collection of books for children and adults on Revolutionary War history, colonial American life, and northern slavery, including two titles with special connections to the Royall House:

Great Houses of New England (Blackburn and Gross). Includes stunning new photos of the Royall House as well as other distinctive New England properties. List \$55 - our special price \$40 (lower than Amazon.com)

Alexandra Chan's book, *Slavery in the Age of Reason* about the Royall House archaeological dig and its lessons. Special discounted price, \$35 each.

All proceeds from the Shop support the Royall House and Slave Quarters.

Our Historic Concert on September 20, 2009

A Concert of 18th-Century Music

In the West Parlor of the Royall House (1737)
Medford, Massachusetts

September 20, 2009
2 p.m.

Héloïse Degrugillier
Recorder

with

Audrey and Paul Cienniwa
basso continuo

Presented by the Royall House Association

*This program is supported in part by a grant from the
Medford Cultural Council, a local agency that is supported
by the Massachusetts Cultural Council, a state agency.*



The Music...

Héloïse Degrugillier
Recorder

Audrey and Paul Cienniwa
basso continuo

Fantasia No. 1, C Major, TWV 40:2
Georg Philipp Telemann (1681-1767)

Sonata, B-flat Major, HWV 377
George Frideric Handel (1685-1759)

Fantasia No. 9, E Major, TWV 40:10
Georg Philipp Telemann (1681-1767)

Sonata, e minor, BWV 1034
Johann Sebastian Bach (1685-1750)

Fantasia No. 6, d minor, TWV 40:7
Georg Philipp Telemann (1681-1767)

Sonata, F Major, HWV 369

...the Musicians



Medford Historical Society's first Bike Tour at the Royall House



(Which was also Museum Day!)



The Kitchen in the main house as it looks today



**If you haven't been on a Tour (lately), we're open through
November 1, 2009**

Saturdays and Sundays - Tours at 1, 2, 3, and 4 p.m.

FREE to members - modest admission to others